

# Intermountain Intertie System 2022



# Intermountain Intertie System

- It is a collection of open 2 Mtr repeaters that are connected together with RF links that covers most of Utah
- It has a link into the Idaho repeaters operated by Vance, WA7FDR and the Utah VHF Society
- It has a link into a 2 Mtr repeater located at Evanston, Wyoming owned by the VHF Society
- It has a link to the Las Vegas 146.880 repeater by joint agreement with LVRA
- It has a link into the ARA Arizona repeater system by joint agreement
- Built and maintained by Volunteers

# Intermountain Intertie System

## Northern Utah

- **147.180** + Tone 100.0 Hz. Hidden Peak (East of Salt Lake City, Utah, at the top of the Snowbird Tram)
- **147.120** + Tone: 100.0 Hz. Farnsworth Peak (southwest of Salt Lake City, Utah, Fox13 site)
- **145.490** - Tone: *100.0 Hz*. Promontory Point, 23 miles west of Ogden
- **147.020** + Tone: 100.0 Hz. Bear Lake (Laketown)
- **145.270** - Tone: 100.0 Hz. Scott's Peak (approx. 2 miles north of Brighton, Utah.)

## Wyoming

- **146.860** - Tone: 100.0 Hz. Medicine Butte, (North of Evanston, Wyoming)

# Intermountain Intertie System

## Central Utah

- **145.270** - Tone 103.5 Hz. Levan Peak near Nephi gives I-15 coverage from Provo to Scipio
- **146.840** + Tone: 100.0 Hz. Monroe Peak near Richfield gives I-70 coverage from Salina to Sevier

The link from Levan to Monroe is broken so they are not linked together at this time. Equipment has not arrived.

# Intermountain Intertie System

## Southern Utah

- **146.940** - Tone 100.0 Hz Frisco Peak (Milford, Utah)
- **146.800** - Tone: 100.0 Hz. Blowhard Peak ( Near Cedar Breaks National Monument)
- **146.820** - Tone: 100.0 Hz. St George (Utah Hill, west of St George)
- **147.300** + Tone: 100.0 Hz. Jacob Lake (South of Kanab)
- **448.600** - Tone 100.0 Hz. Navajo Mtn near Page, Az
- **147.200** - Tone 100.0 Hz. Tod's Junction south of Panguitch

# Intermountain Intertie System

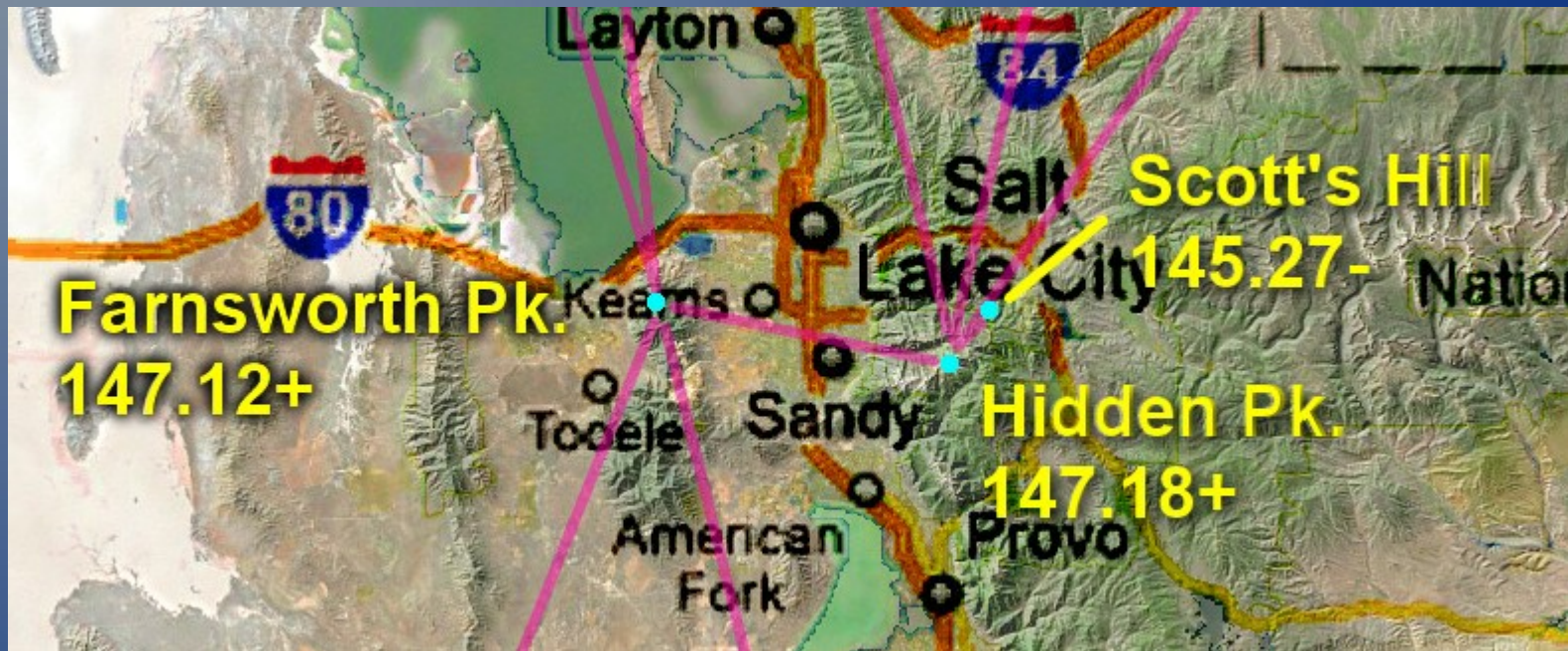
**Has a Link into the Arizona ARA system:**

- **448.875** - Tone 100.0 Hz. Mt Eldon near Flagstaff

**Has a Link into Nevada:**

- **146.880** - Tone: 100.0 Hz. Las Vegas  
(Mt. Potosi, SW of Las Vegas)

# Hidden Peak repeater (a.k.a “Snowbird”) 147.180+ (100.0 Hz)



# Snowbird Tram 11,000 Ft South east of Salt Lake



# Snowbird 147.180+ Tone 100.0 Hz Antennas



## Snowbird 147.180+ 100.0 Hz Repeater Rack



# Snowbird 147.180+ 100.0 Hz Repeater and Link Radios



## Snowbird 147.180+ Repeater Tone 100.0 Hz

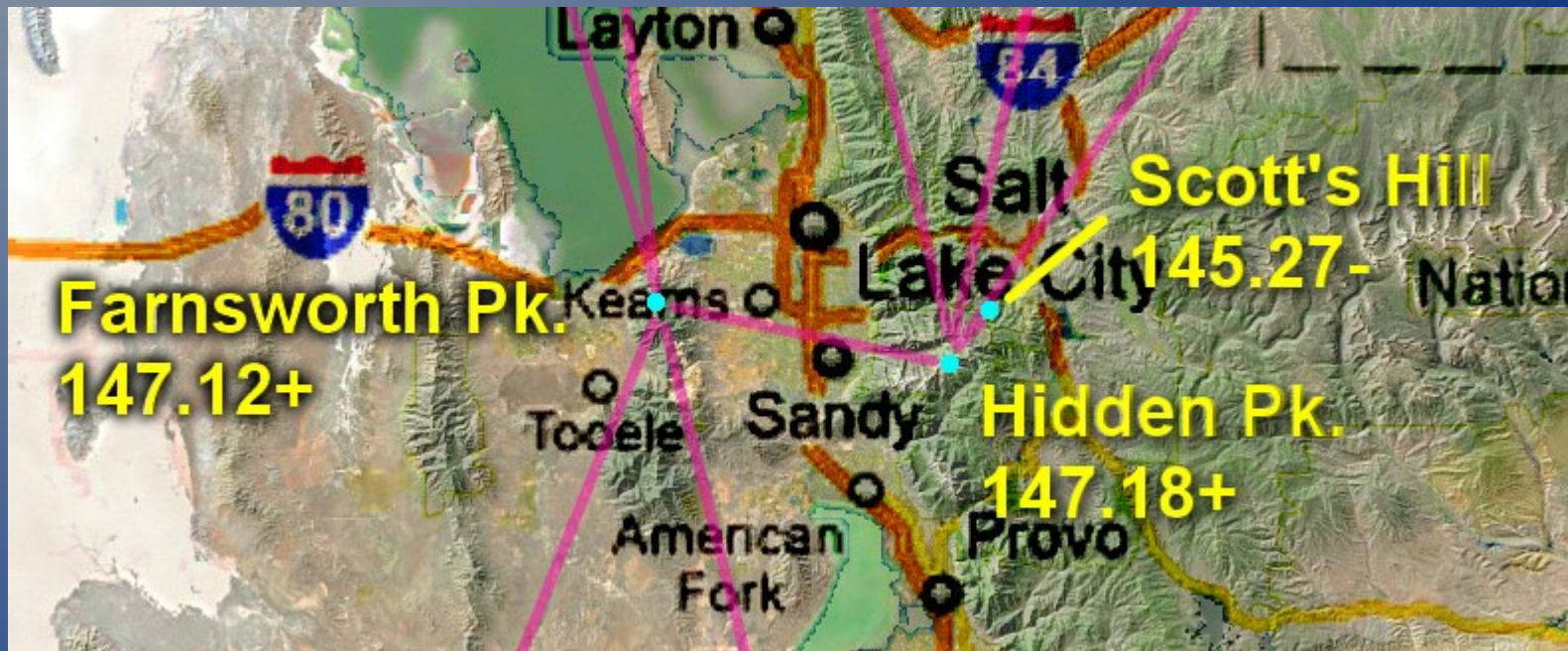


## Snowbird 147.180+ 100.0 Hz Duplexer



# Farnsworth Peak

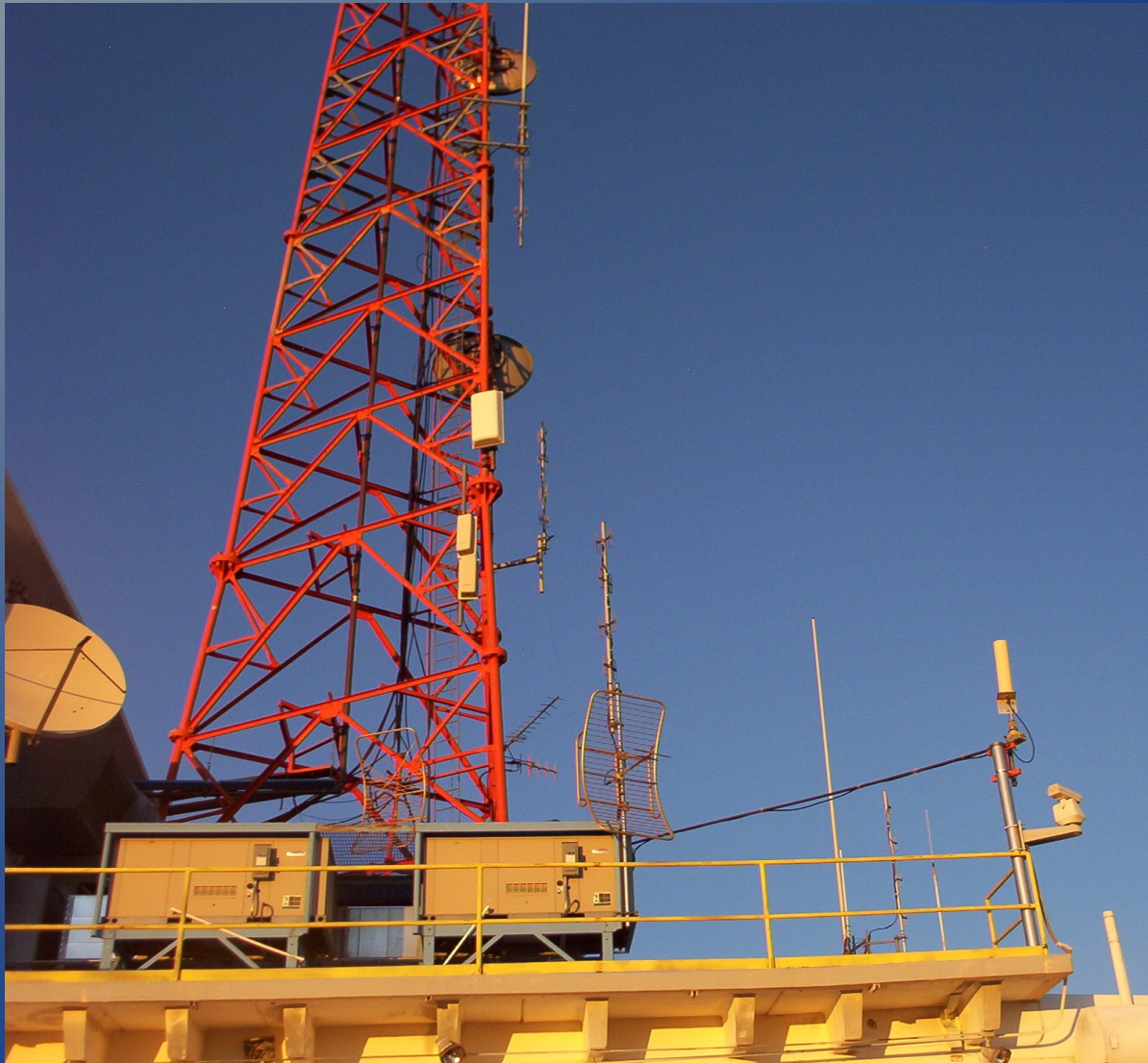
147.120+ (100.0 Hz)



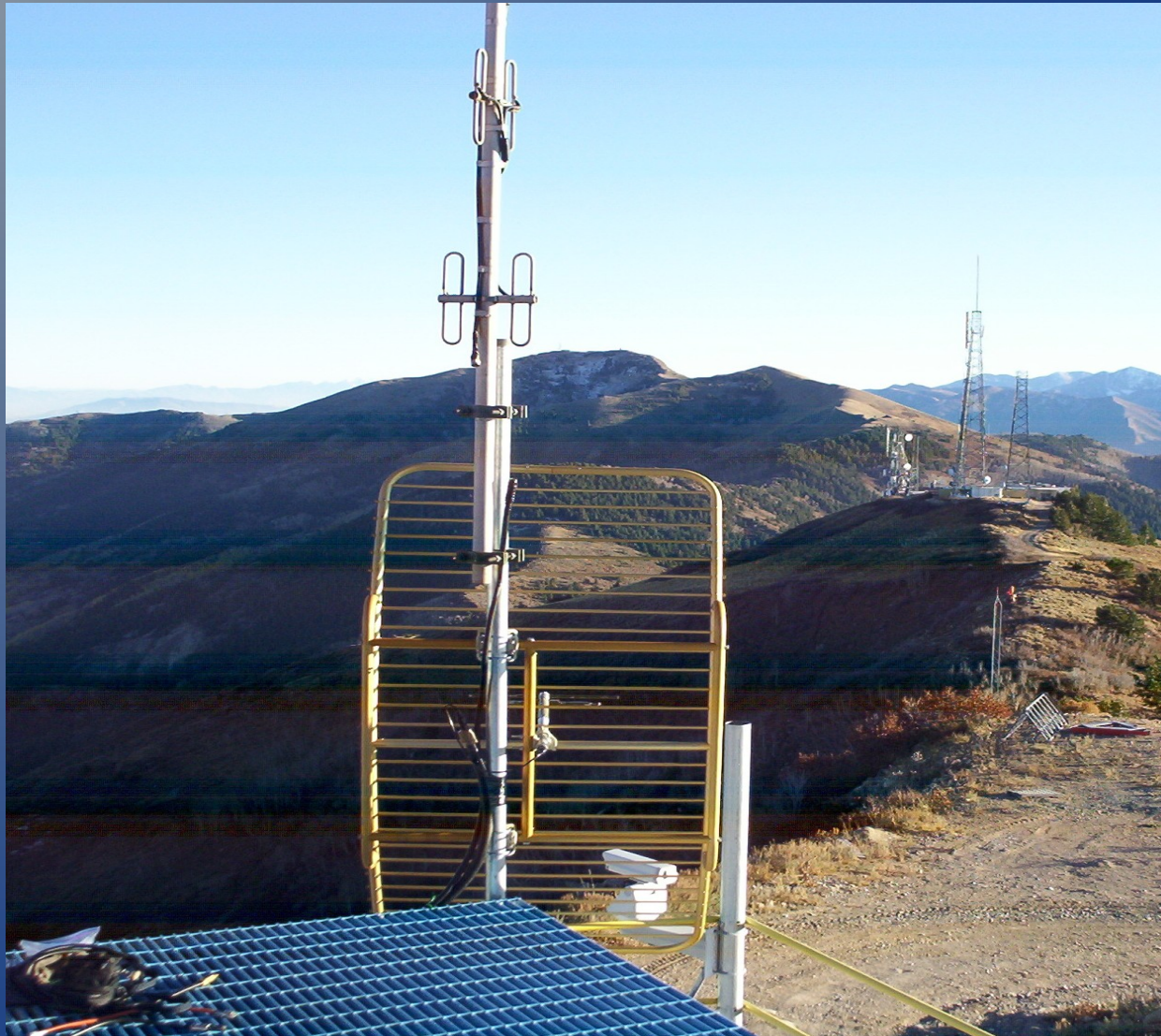
# Farnsworth Peak In Winter



# Farnsworth Peak 147.120+ Tone 100.0 Hz Antennas



# Farnsworth Peak 147.120+ Tone 100.0 Hz Link to Frisco Peak



# Farnsworth Peak 147.120+ 146.940- & others

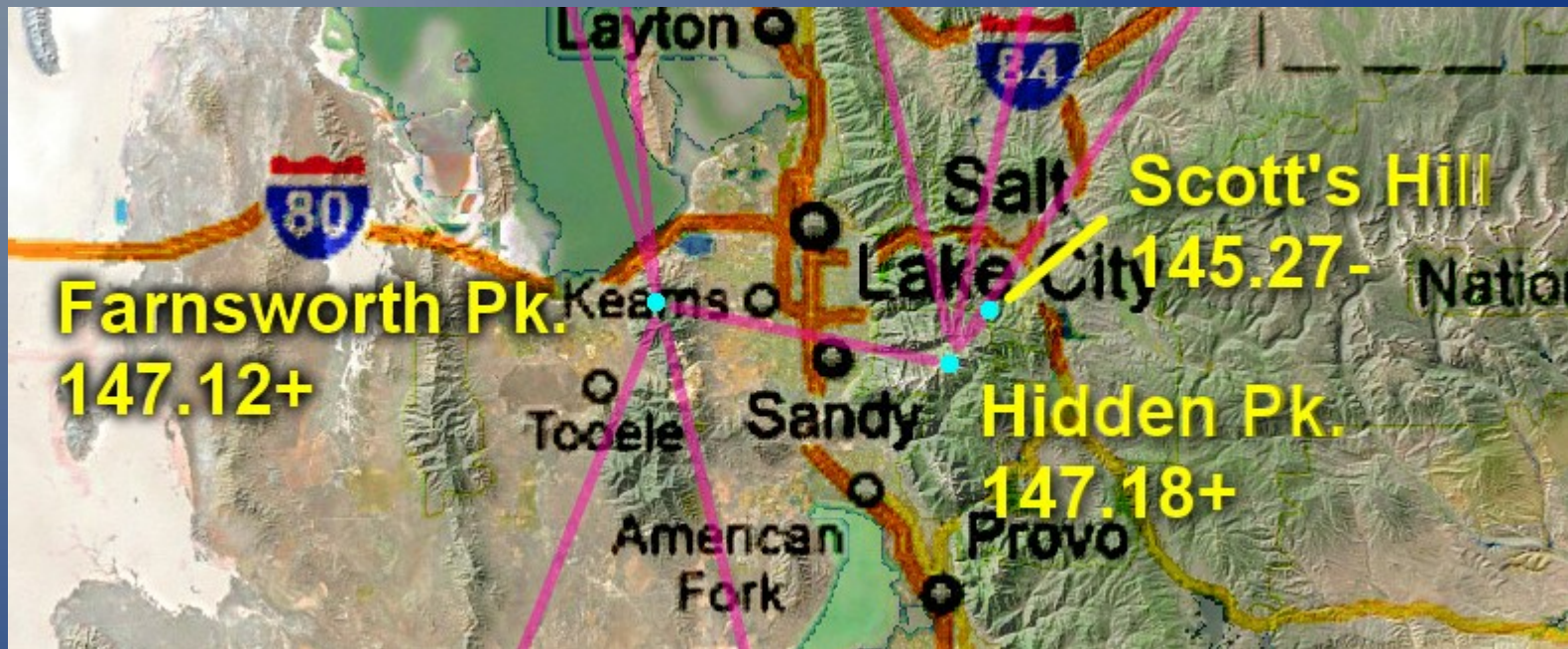


# View towards Salt Lake from Farnsworth Peak



# Scott's Peak

145.270- (100.0 Hz)

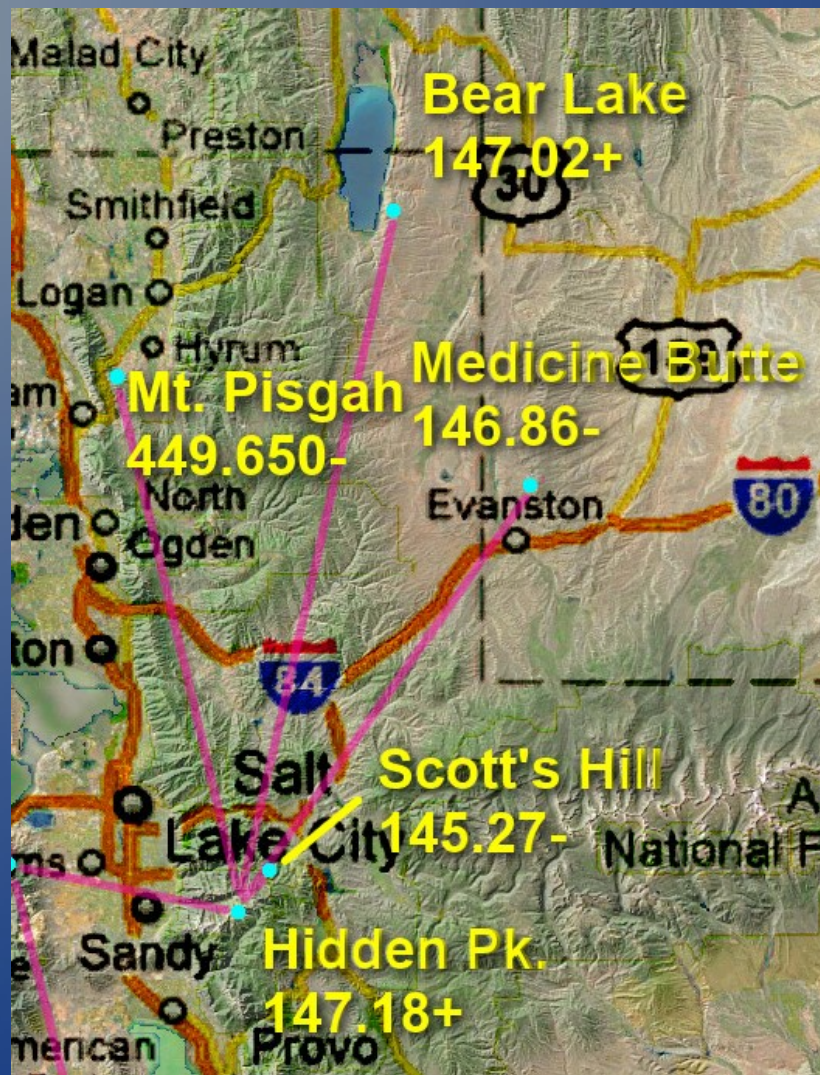


# Scotts Peak 145.270- Tone 100.0 Hz Antennas



# Mt. Pisgah

449.650- (100.0 Hz)



# Mt Pisgah 449.650- 100.0 Hz Site



# Mt Pisgah 449.650- 100.0 Hz Equipment



# Promontory Point

145.490- 100.0 Hz

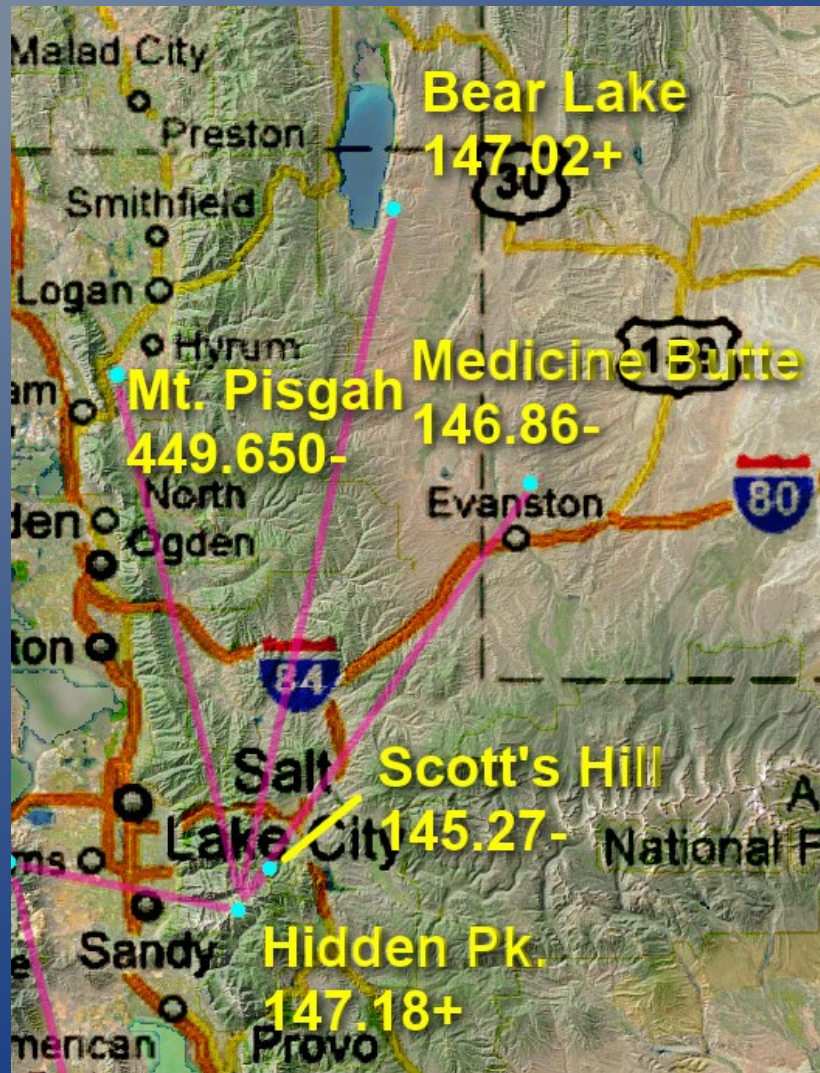


# Promontory Point 145.490- 100 Hz



# Bear Lake

147.020+ (100.0 Hz)



# Bear Lake 147.020+ Tone 100.0 Hz Old Antennas Before 2017



# Bear Lake Tower Failure 2017



Bear Lake 147.020+  
Tone 100.0 Hz  
New Antennas



# Bear Lake 147.020+ Tone 100.0 Hz



# Medicine Butte

146.860- (100.0 Hz)



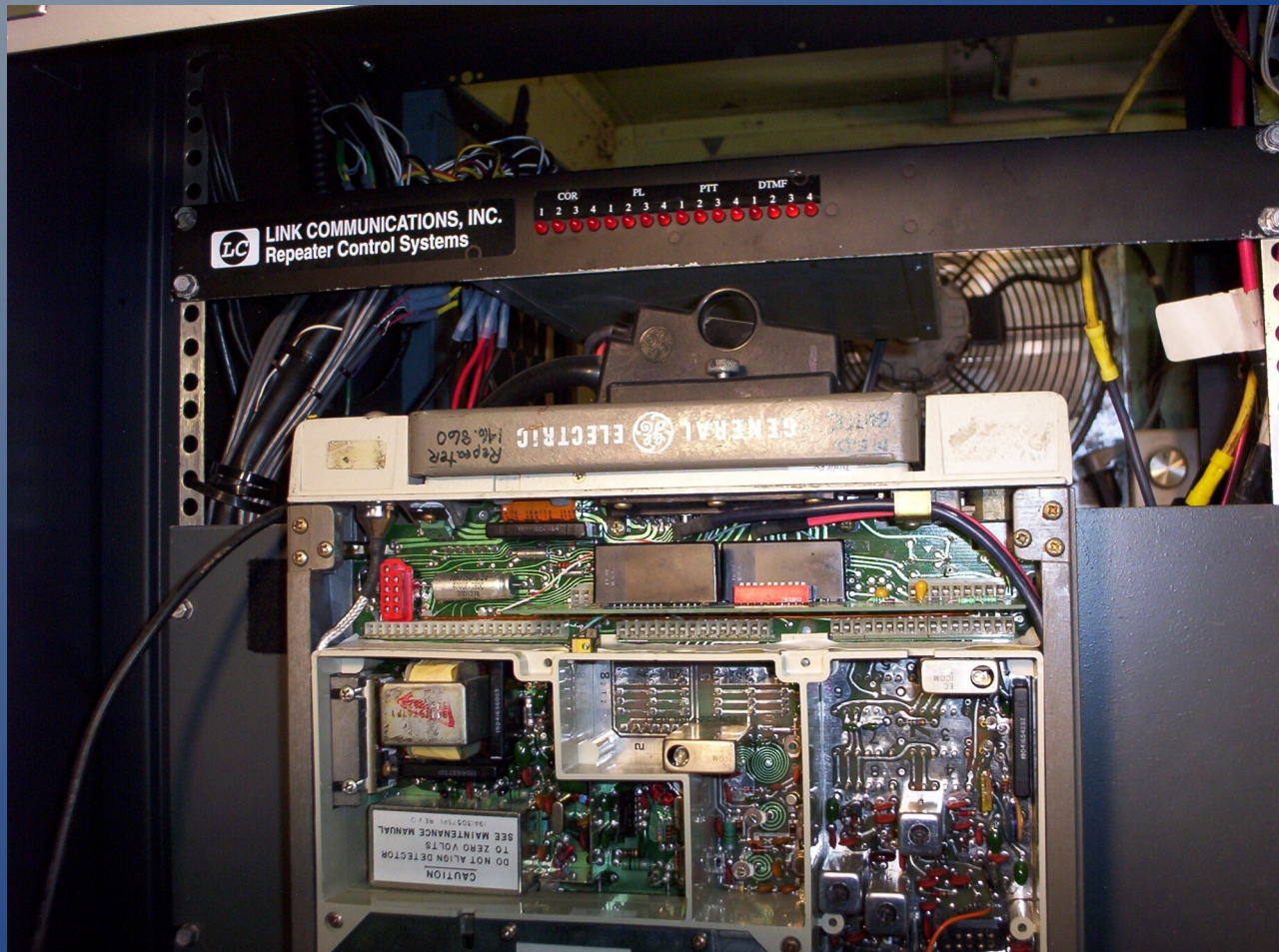
# Medicine Butte 146.860- Tone 100.0 Hz



# Medicine Butte 146.860 -Tone 100.0 Hz Antennas



# Medicine Butte Repeater 146.860- 100.0 Hz



# Levan Peak

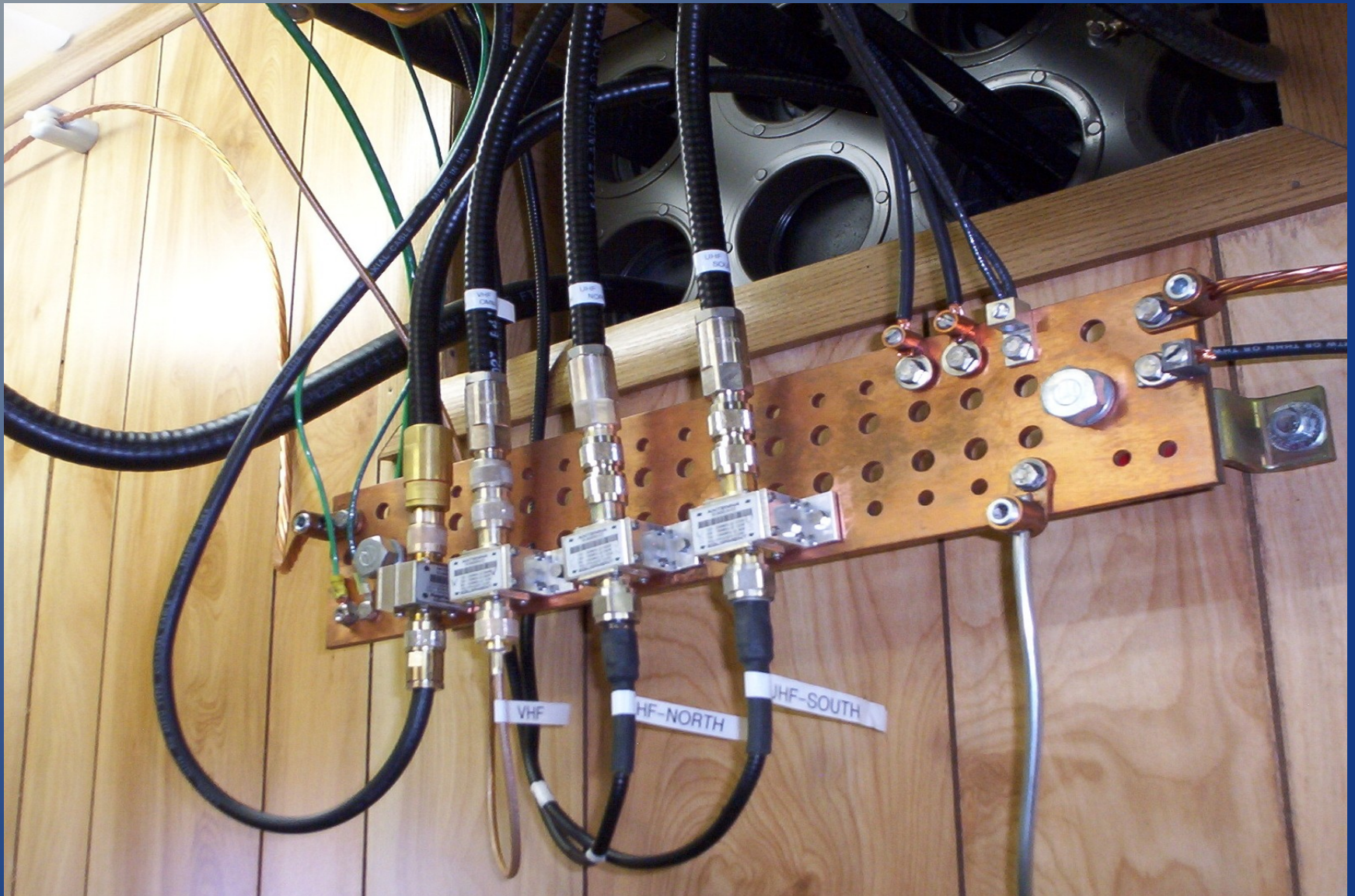
145.270- (103.5 Hz)



# Levan Peak 145.270- Tone 103.5 Hz Repeater



# Levan Peak 145.270- Tone 103.5 Lightning Grounds



# Levan Peak 145.270- Tone 103.5 Hz Antennas



# Frisco Peak

146.940- (100.0 Hz)



# Frisco Peak 146.940- Tone 100.0 Hz New Link Antennas



# Frisco Peak 146.940- Tone 100.0 Hz New Link Antennas



# Frisco Peak Tower Failure



# Frisco Peak Tower Failure 2017

## Antenna Damage



# Frisco Peak 146.940- Tone 100.0 Hz New Equipment shared with Cactus



# Blowhard Peak

146.800- (100.0 Hz)



# Blowhard 146.800- Tone 100.0 Hz Equipment shared site with Cactus



# Blowhard 146.800- Tone 100.0 Hz Link Cavity Filtering



# Blowhard 146.800 - Tone 100.0 Hz

## Antennas in Summer



# Blowhard 146.80

## Winter



# Utah Hill

146.820- (100.0 Hz)



# Utah Hill 146.820- 100.0 Hz (St George)

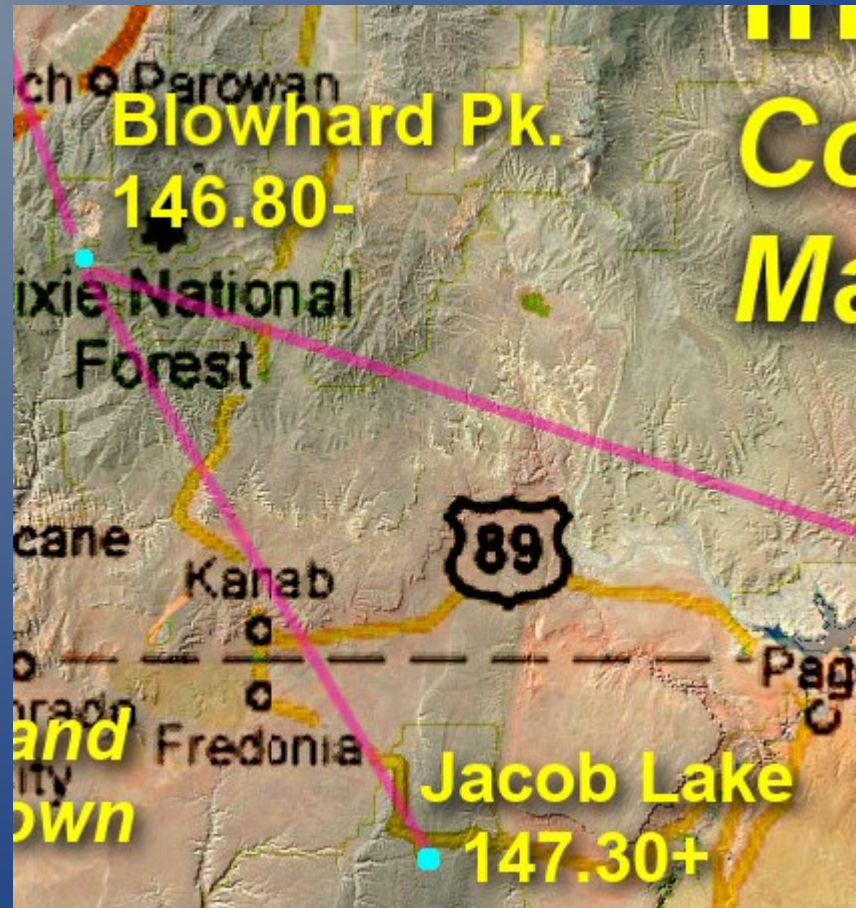


# Utah Hill (NEW) 146.820- 100.0 Hz (St George)



# Jacob Lake

147.300+ (100.0 Hz)



# Jacob Lake 147.300+ Tone 100.0 Antennas



# Jacob Lake 147.300+ Tone 100.0 Hz Tower Base is Bigger than a Car!



# Jacob Lake 147.300+ Tone 100.0 Hz Repeater



# Navajo Mtn. 448.600- (100.0 Hz)



# Navajo Mtn. 448.600 – 100.0 Hz near Page, Az



# Navajo Mtn. 448.600 – 100.0 Hz Don WA7GTU working on Heliacx



Navajo Mtn. 448.600 – 100.0 Hz  
Repeaters and Link Equipment  
146.960- 100 Hz co-located



# Navajo Mtn. 448.600 – 100.0 Hz

## Installing the UHF Omni Antenna



# Intermountain Intertie System Tod's Junction near Hatch



# Intermountain Intertie System

## Tod's Junction 147.200+ 100.0 Hz Repeater



# Intermountain Intertie System

## Idaho:

447.225 – Tone 100 Hz, Malad Repeater site

2 Meter Simplex remote, Carrier Squelch Malad City  
(near Malad Pass.)

145.210 – Tone :100 Hz. Sedgewick Peak (near Lava  
Hot Springs)

145.270 - Tone: 100.0 Hz. Mount Harrison (near  
Burley)

146.850 - Tone: 100.0 Hz. Jumpoff Peak (west of  
Howe - Serves Idaho Falls.)

145.230 - Tone: 100.0 Hz. Sawtelle Peak (near West  
Yellowstone)

145.130 – Tone: 100.0 Hz. Shafer Butte (north of Boise)

145.150 – Tone: 100.0 Hz. Mtn. Home (north of town)

# Intermountain Intertie System Shafer Butte Tower



# Intermountain Intertie System Shafer Butte Repeater Equipment



# Intermountain Intertie System

## Arizona

Links into Arizona through the Flagstaff 448.875-Tone 100.0 Hz repeater on Mt. Eldon and then into the ARA System all the way to Phoenix

<https://W7ARA.org>

# Intermountain Intertie System

## Projects for 2023

Install New Repeaters and link equipment and rugged Link antennas when received from the ARDC grant.

Install the UHF link to the Sinbad System.

Build and install the new 145.350- Tone 100 Hz repeater and link for Morgan.

# Intermountain Intertie System

Just Google “Intermountain Intertie”

[Http://www.utahvhfs.org/snowlink.html](http://www.utahvhfs.org/snowlink.html)

Dues are \$17.00 per year going to \$20.00 in 2023

Utah VHF Society

P.O.Box 482

Bountiful, Utah 84011-0482